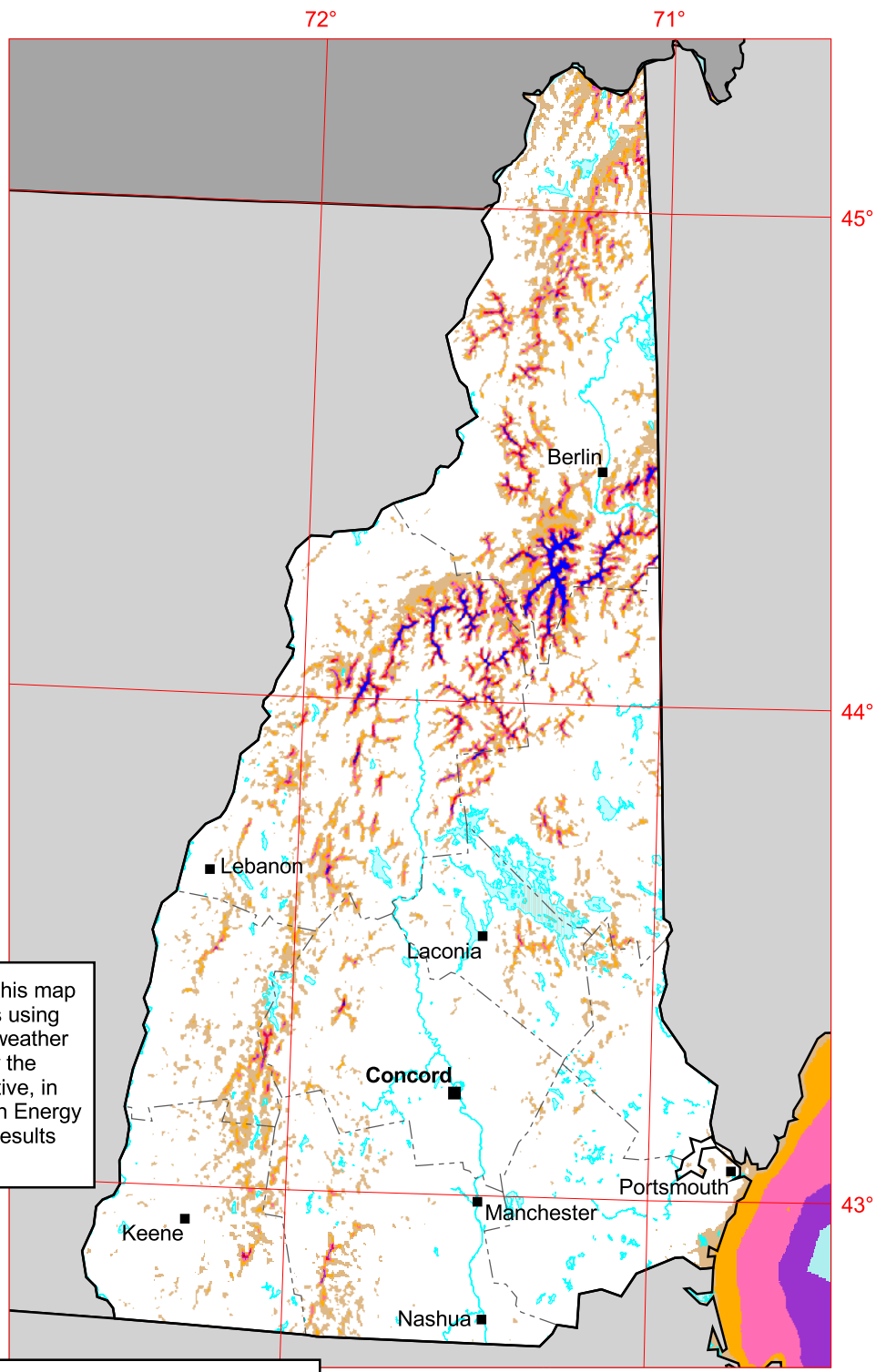


# New Hampshire

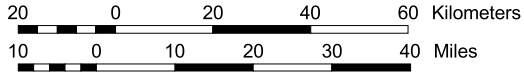
## 50 m Wind Power



The annual wind power estimates for this map were produced by TrueWind Solutions using their Mesomap system and historical weather data. This work was commissioned by the Massachusetts Technology Collaborative, in conjunction with the Connecticut Clean Energy Fund and Northeast Utilities, and the results have been validated by NREL.

Wind Power Classification				
Wind Power Class	Resource Potential	Wind Power Density at 50 m $W/m^2$	Wind Speed <sup>a</sup> at 50 m m/s	Wind Speed <sup>a</sup> at 50 m mph
1	Poor	0 - 200	0.0 - 5.6	0.0 - 12.5
2	Marginal	200 - 300	5.6 - 6.4	12.5 - 14.3
3	Fair	300 - 400	6.4 - 7.0	14.3 - 15.7
4	Good	400 - 500	7.0 - 7.5	15.7 - 16.8
5	Excellent	500 - 600	7.5 - 8.0	16.8 - 17.9
6	Outstanding	600 - 800	8.0 - 8.8	17.9 - 19.7
7	Superb	> 800	> 8.8	> 19.7

<sup>a</sup> Wind speeds are based on a Weibull k value of 2.0



U.S. Department of Energy  
National Renewable Energy Laboratory

